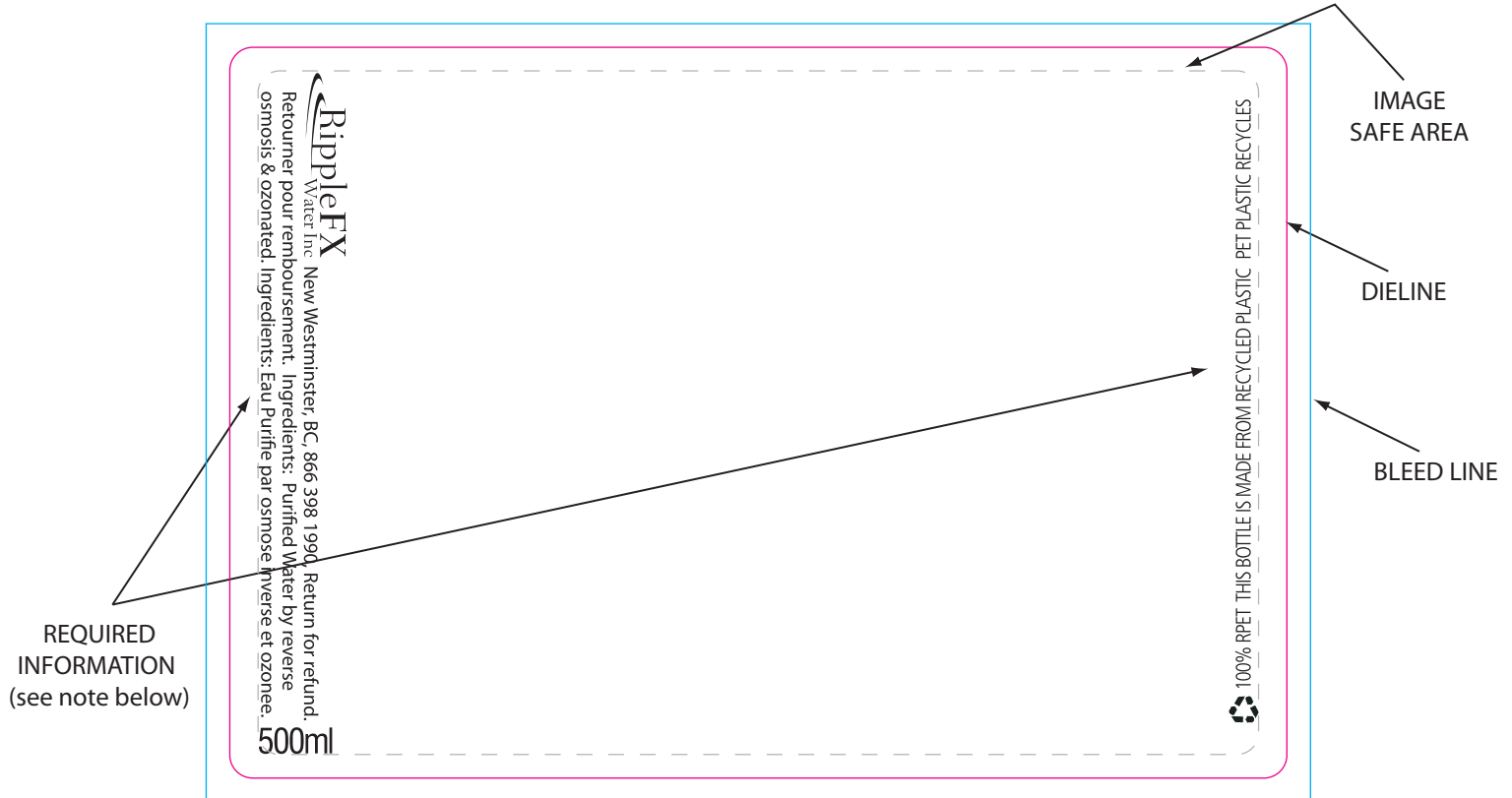


PLEASE READ SPECS CAREFULLY!

Email: info@ripplefxwater.com
 Phone: 604.522.4400 Fax: 604.522.4474

The Printer ASSUMES NO RESPONSIBILITY FOR ERRORS
 MADE ON ARTWORK SUPPLIED BY THE CUSTOMER.



PRINT SPECS

Please use the following information when submitting art. Ripple FX cannot be responsible for art that does not follow our specs. To insure the integrity of your design, we encourage artwork to be supplied as a print quality PDF.

ACCEPTABLE FILE FORMATS:

- PDF (preferred)
- Quark Xpress
- Adobe InDesign
- Adobe Illustrator
- Adobe Photoshop
- Adobe Acrobat

WE DO NOT ACCEPT THESE FILE FORMATS AS ART:

Microsoft Publisher, Word, Works, Excel, Powerpoint, Word Perfect, low resolution jpegs or bitmaps.

BLEED - For art that Bleeds (color goes to the edges) - Add an extra 1/8 inch to each side that bleeds. We strongly

suggest you do not use a border around your image, as we cannot guarantee it will be straight or even.

IMAGE SAFE AREA - Keep art type or critical design at least 1/8 inch from the trimmed edge. Shift when printing and cutting is unavoidable and we don't want your information to be cut off.

IMAGES - Resolution should be 300-350 dpi @100%. Scans at lower resolutions may print fuzzy. **DO NOT USE IMAGES PULLED FROM A WEBSITE.**

COLOR - CMYK files or Spot Colour. Keep in mind colors you see on your monitor or output from inkjet printers will NOT accurately reflect the actual colors we print on our CMYK 4-color process printing. We'll do our best to match colors but because of variations inherent in the printing process we cannot guarantee an exact match.

FORMATS - Outline, convert to curves or embed your selected fonts within the program you use to create your finished artwork. This way we can print them as you intended them to appear.

DESIGN - Your label will go on a curved surface. In the design process you may want to consider that your image and/or message will be most visible if it is positioned in the middle of the label.

REQUIRED INFORMATION - This information must be visible on the label. You can reverse it or change the color to suit your artwork. It can also be centered or moved to either end.

We reserve the right to refuse to print art that does not follow our art guidelines. If we feel your art will print poorly, but you want to use it anyway, you may be required to sign a waiver before we proceed.